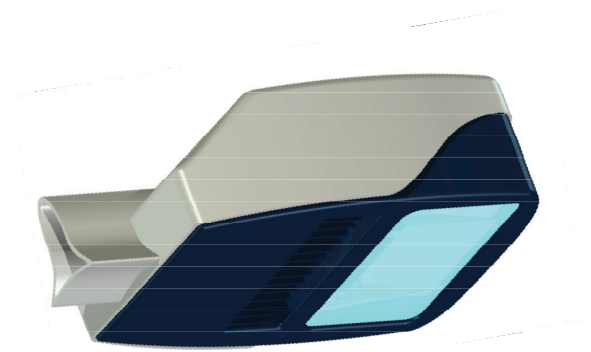


Imbrium

The Imbrium Parking Luminaire featuring Light Emitting Plasma™



- ✓ 23,000 Source Lumens
- ✓ Energy Efficient: 72 Lumens/Watt
- ✓ Long Life – 50,000 hours
- ✓ Color Rendering of 75 CRI
- ✓ Compact Emitting Area
- ✓ Forward Directional Output
- ✓ Dimmable to 20%
- ✓ Rapid Start
- ✓ Digital or Analog Controllability

An ideal lighting fixture for parking lots and other high illuminance area applications. Replaces 400W metal halide and HPS, 1000W mercury vapor, and 1500W incandescent lighting fixtures without the need for new poles or changed spacing. The head is a fixed position; the body features a modern design and the ability to choose two colors; and the electrical components are IP67 rated.



Part Description	Parking
Ordering Codes	Imbr ium
Length	598mm/23.6"
Width	408mm/16.1"
Weight	34 lbs
Operating Temperature	-40 to 45 °C
Wind Load EPA	1.1 ft ²
Rated Average Life	50,000 hours
Source Lumens	23,000 lumens
Fixture Lumens	20,000 lumens
Voltage	100-277V 480V Optional
Typical Turn-On Time	45 seconds
CCT	5,500K
CRI	75
Dimming Range ¹	20-100%
Nominal AC Power	295 watts @208V
Current @ 120v	<2.6A
Current @ 277v	<1.1A
Current @ 480v	<0.65A
Power Factor	0.99

Compliance Testing	
Safety, Lamp (US)	UL 1029
Safety, Lamp (EU)	EN61347-1: 2008 EN61347-2-9:2009
Photometric, Lamp & Fixture	IESNA LM-79
EMC	CISPR22/FCC Part 18 Class A
Materials, Lamp	RoHS

Fixture Pending UL Certification

Mounts:	1½"-2½" poles 20-35 ft high
Lens:	Tempered Glass
Finish:	Powder Coat
Housing:	Aluminum

Fixture	Source	Optics	Voltage	Color	Options
IMB					

SAMPLE ORDER CODE IMB-ST41-01-T4-1-XX-PC1

STA41-01 (21000 Lumens 75 CRI) 280W	TYPE II SHORT (T2S)	1 120/277	BZ Bronze	PC1 120v Photo Cell
STA32-01 (14000 lumens 75 CRI) 232W	TYPE II LONG (T2L)	2 347/480	BL Black	PC2 208v Photo Cell
STA25-01 (10000 lumens 75 CRI) 160W	TYPE III (T3)		WH White	PC3 240v Photo Cell
	TYPE IV (T4)		GR Green	PC4 277v Photo Cell
	TYPE V (T5)		GY Gray	PC5 480v Photo Cell
			XX Custom Color	PCR Receptacle Only
				F1 Single Leg Fusing
				F2 Double Leg Fusing